

# Dry bath

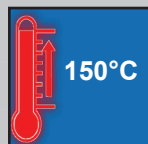
compact design, 1-block-model, up to 150°C, various blocks available



Tel. 2310855844, 2106452848

Email: [contact@megalab.gr](mailto:contact@megalab.gr)

[www.megalab.gr](http://www.megalab.gr)



## H-20 up to 150°C

### Ideal for:

- enzyme reactions, inactivation of sera, incubation and other laboratory procedures
- multifunctional dry block heater

### Features:

- new design: lighter and more compact than the previous model
- user's self-compensation function to offset between real temperature and indicated temperature ( $\pm 10.0^\circ\text{C}$ )
- ergonomic, compact design & modular block system
- internal PPS bath ensures best insulation, block made from anodized aluminium
- precise temperature control
- digital timer with delay time and operation time
- convenient integrated timer for time-sensitive incubations
- block removal tool with screw thread included
- storage function for the set values of temperature and timer
- various block types (optional)
- backlight LCD display
- CE certified and unique serial number for tracing

### Safety mechanism:

- locking mode
- overheat and over-current protection
- sensor error detection

### Controller:

- digital fuzzy controller with **Jog-Dial** and **main touch button**

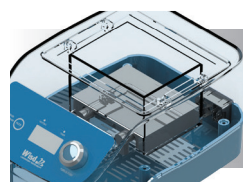


H-20 set with block and block removal tool

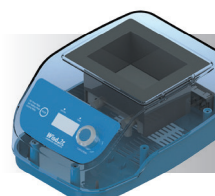
Model	H-20	
Block	interchangeable block (90 x 120 x 60 mm) for various tubes	
Standard block	-	2x 48 holes for 1.5/2 ml centrifuge tubes
Temperature range and Accuracy	ambient to $+5^\circ\text{C}$ to $150^\circ\text{C}$ , $\pm 0.1$ at $37^\circ\text{C}$ , $\pm 0.2^\circ\text{C}$ at $90^\circ\text{C}$ , $\pm 0.4^\circ\text{C}$ at $135^\circ\text{C}$	
Heat up speed & sensor	approx. $5^\circ\text{C}/\text{min}$ , PT100	
Timer with alarm	99hr 59min, alarm (error status and timer end)	
Dimension	unit: 178 x 226 x 138 mm, block: 90 x 120 x 60 mm	
Packing size	230 x 290 x 245 mm, 2.2 kg	230 x 355 x 245 mm, 3.5 kg
Power supply	1 Phase AC 120V, 60 Hz or AC 230V, 50/60Hz	
Power consumption	300 W	
Order number 230V	Unit: DH.WHB02000	Set: DH.WHB02100
Order number 120V	Unit: DH.WHB02001	Set: DH.WHB02101

Set includes: Unit  
Block  
Block removal tool

H-20  
BLC548 for 48x 1.5/2 ml tubes



High quality molded heater ensures reliable and consistent temperature



Maximum heat insulation and highest chemical resistance by PPS materials

Accessories: Dry bath blocks and removal tool on page 33

# Dry bath

one block, -5°C up to 95°C, various blocks available



HB-R48 Set with block and tong

## HB-R48 -5°C up to 95°C

### Ideal for:

- enzyme reactions, inactivation of sera, incubation and other laboratory procedures

### Features:

- user's self-compensation function to offset between real temperature and indicated temperature ( $\pm 10.0^\circ\text{C}$ )
- 2 peltier cooling modules
- unit made of stainless steel and powder-coated steel, block made of anodized aluminium
- block extraction tongs "BLE101" and block cover are included
- molded heater (300W), PT100 sensor
- storage function for the set values of temperature and timer
- backlight LCD display
- CE certified and unique serial number for tracing

### Safety mechanism:

- locking mode
- overheat and over-current protection
- sensor error detection

### Controller:

- digital PID and fuzzy controller with *Jog-Shuttle-switch*

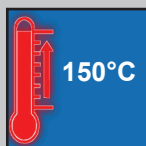
Model	HB-R48	
Block	interchangeable block (90 x 120 x 60 mm) for various tubes	
Standard block	-	48 holes for 1.5/2 ml centrifuge tubes
Temperature range and accuracy	ambient to -5°C to 95°C, $\pm 0.1$ at 37°C, $\pm 0.2^\circ\text{C}$ at 90°C	
Cool-down speed	2.3°C/min. between 95°C to 25°C, 0.5°C/min between 25°C to -5°C	
Heat-up speed	approx. 5°C/min	
Timer with alarm	99hr 59min, alarm (error status and timer end)	
Dimension	unit: 185 x 230 x 220 mm, block: 90 x 120 x 60 mm	
Packing size	350 x 220 x 310 mm, 9 kg	
Power supply	1 Phase AC 120V, 60 Hz or AC 230V, 50/60Hz	
Power consumption	450 W	
Order number 230V	Unit: DH.WHB00248	Set: DH.WHB00249
Order number 120V	Unit: DH.WHB02248	Set: DH.WHB02249

Set includes: Unit HB-R48  
Block BLC548 for 48x 1.5/2 ml tubes  
Tong BLE101

Accessories: Dry bath blocks and tong on page 33

# Dry bath

two blocks, individual controller for each block, up to 150°C, various blocks available



## HB-96D 2 blocks up to 150°C

### Ideal for:

- enzyme reactions, inactivation of sera, incubation and other laboratory procedures
- multifunctional dry block heater

### Features:

- user's self-compensation function to offset between real temperature and indicated temperature ( $\pm 10.0^{\circ}\text{C}$ )
- unit made of stainless steel and powder-coated steel, block made of anodized aluminium
- digital timer function
- block extraction tongs "BLE101" & block cover are included
- storage function for the set values of temperature and timer
- alarm function: error status and timer end
- various kinds of blocks are offered (optional)
- dual block and 2 molded heater (300W)
- backlight LCD display
- CE certified and unique serial number for tracing

### Safety mechanism:

- locking mode
- overheat and over-current protection
- sensor error detection

### Controller:

- dual digital fuzzy controller with *Jog-Shuttle-switch*



HB-96D Set with blocks and tong

Model	HB-96D	
Block	interchangeable block (90 x 120 x 60 mm) for various tubes	
Standard block	-	2x 48 holes for 1.5/2 ml centrifuge tubes
Temperature range and Accuracy	ambient to $+5^{\circ}\text{C}$ to $150^{\circ}\text{C}$ , $\pm 0.1$ at $37^{\circ}\text{C}$ , $\pm 0.2^{\circ}\text{C}$ at $90^{\circ}\text{C}$ , $\pm 0.4^{\circ}\text{C}$ at $135^{\circ}\text{C}$	
Heat up speed & sensor	approx. $5^{\circ}\text{C}/\text{min}$ PT 100	
Timer with alarm	99hr 59min, alarm (error status and timer end)	
Dimension	unit: 285 x 250 x 155 mm, 2 x block: 90 x 120 x 60 mm	
Packing size	400 x 270 x 200 mm, 6 kg	
Power supply	1 Phase AC 120V, 60 Hz or AC 230V, 50/60Hz	
Power consumption	600 W	
Order number 230V	Unit: DH.WHB00198	Set: DH.WHB00199
Order number 120V	Unit: DH.WHB02198	Set: DH.WHB02199

Set includes: Unit HB-96D  
Block 2x BLC548 for 48x 1.5/2 ml tubes  
Tong BLE101

Accessories: Dry bath blocks and tong on page 33